

---

---

**AD**

---

---

Validity: **PERMANENT.**

**CORRECTIONS TO AIRAC AIP AMDT 12/2023**

1. Ref to GVAC AD 2-21 NEW VERSION OF STANDARD INSTRUMENT DEPARTURES (SID) DESCRIPTION – ICAO

[See Attachment 1](#)

2. Ref to GVAC AD 2-37 NEW VERSION OF INSTRUMENT APPROACH CHART ILS RWY 01 DESCRIPTION – ICAO

[See Attachment 2](#)

3. Ref to GVAC AD 2-41 NEW VERSION OF INSTRUMENT APPROACH CHART VOR RWY 19 DESCRIPTION – ICAO

[See Attachment 3](#)

4. Ref to GVAC AD 2-44 NEW VERSION OF INSTRUMENT APPROACH CHART RNP RWY 01 ACFT CAT (A - B - C - D) – ICAO

[See Attachment 4](#)

5. Ref to GVAC AD 2-46 NEW VERSION OF VERSION INSTRUMENT APPROACH CHART RNP RWY 19 ACFT CAT (A - B - C - D) - ICAO

[See Attachment 5](#)

6. Ref to GVNP AD 2-9 NEW VERSION OF AERODROME CHART - ICAO

[See Attachment 6](#)

7. Ref to GVNP AD 2-35 NEW VERSION OF INSTRUMENT APPROACH CHART NDB RWY 03 (CAT A&B) - ICAO

[See Attachment 7](#)

8. Ref to GVNP AD 2-37 NEW VERSION OF INSTRUMENT APPROACH CHART NDB RWY 03 (CAT C&D) - ICAO

[See Attachment 8](#)

9. Ref to GVAC AD 2-30 NEW VERSION OF STANDARD ARRIVAL CHART INSTRUMENT (STAR) GNSS RWY 01 Categories (A - B - C - D) DESCRIPTION

[See Attachment 9](#)

10. Ref to GVAC AD 2-35 NEW VERSION OF STANDARD ARRIVAL CHART INSTRUMENT (STAR) GNSS RWY 19 Categories (A - B - C - D) DESCRIPTION

[See Attachment 10](#)

#### **INSERTION OF GVBA AND GVSV GNSS WAYPOINTS COORDINATES**

11. Ref to GVBA AD 2-31 INSTRUMENT APPROACH CHART RNAV (GNSS) RWY 03 (VERSO) – ICAO

[See Attachment 11](#)

12. Ref to GVBA AD 2-33 INSTRUMENT APPROACH CHART RNAV (GNSS) RWY 21 (VERSO) - ICAO

[See Attachment 12](#)

13. Ref to GVSV AD 2-25 INSTRUMENT APPROACH CHART RNAV (GNSS) RWY 06 (VERSO) – ICAO

[See Attachment 13](#)

14. Ref to GVSV AD 2-27 INSTRUMENT APPROACH CHART RNAV (GNSS) RWY 24 (VERSO) - ICAO

[See Attachment 14](#)

# ATTACHMENT 1

---

## SAL ISLAND / AMILCAR CABRAL

---

### STANDARD INSTRUMENT DEPARTURES (SID)

RWY 19

#### NOTE APPLICABLE TO ALL SID:

- SPEED CONTROL: MAX IAS 250 kt at FL100 or below.

#### NOTE:

- KEGIL2B, NCL2B, DIMKI2B, PINPO2B, POLMO2B, SVT2B: Length of the dead reckoning segment is not ICAO.

#### **BULVO TWO BRAVO DEPARTURE (BULVO2B)**

Climb on R-190 CVS up to 4.0 DME CVS at 2000 ft or above. Turn right to intercept and follow R-218 CVS direct to BULVO.

#### **DIMKI TWO BRAVO DEPARTURE (DIMKI2B)**

Climb on R-190 CVS up to 5.0 DME CVS. Turn left to follow arc 7.0 DME CVS up to R-136 CVS. Follow magnetic track 028° to intercept and follow R-039 CVS direct to DIMKI.

#### **KEGIL TWO BRAVO DEPARTURE (KEGIL2B)**

Climb on R-190 CVS up to 6.0 DME CVS. Turn right to follow arc 8.0 DME CVS up to R-241 CVS. Follow magnetic track 331° to intercept and follow R-316 CVS direct to KEGIL.

#### **NCL TWO BRAVO DEPARTURE (NCL2B)**

Climb on R-190 CVS up to 4.0 DME CVS. Turn right to follow magnetic track 286° to intercept and follow R-271 CVS direct to L NCL.

#### **PINPO TWO BRAVO DEPARTURE (PINPO2B)**

Climb on R-190 CVS up to 5.0 DME CVS. Turn left to follow arc 7.0 DME CVS up to R-136 CVS. Follow magnetic track 043° to intercept and follow R-055 CVS direct to PINPO.

#### **POLMO TWO BRAVO DEPARTURE (POLMO2B)**

Climb on R-190 CVS up to 5.0 DME CVS. Turn left to follow arc 7.0 DME CVS up to R-168 CVS. Follow magnetic track 098° to intercept and follow R-119 CVS direct to POLMO.

#### **PRAIA TWO BRAVO DEPARTURE (SNT2B)**

Climb on R-190 CVS up to 4.0 DME CVS at 2000 ft or above. Turn right to intercept and follow R-205 CVS direct to VOR/DME SNT.

#### **SAO VICENTE TWO BRAVO DEPARTURE (SVT2B)**

Climb on R-190 CVS up to 4.0 DME CVS. Turn right to follow magnetic track 297° to intercept and follow R-282 CVS direct to NDB SVT at FL085 or above.

#### **TOBIK TWO BRAVO DEPARTURE (TOBIK2B)**

Climb on R-190 CVS up to 5.0 DME CVS. Turn left to follow arc 7.0 DME CVS up to R-168 CVS. Follow magnetic track 098° to intercept and follow R-136 CVS direct to TOBIK.

---

## ATTACHMENT 2

---

---

SAL ISLAND / AMILCAR CABRAL

---

AERONAUTICAL DATABASE REQUIREMENTS

---

### INSTRUMENT APPROACH PROCEDURES

#### RWY 01 ILS

POINT	LAT	LONG	TRUE BEARING	DME DISTANCE (NM)
VOR/DME CVS (IAF)	16° 44' 12.0" N	022° 57' 03.7" W	-	-
BUBSI (IAF)	16° 32' 37.1" N	023° 00' 30.7" W	196.03° (CVS)	12.00 DME CVS
APULU (IAF)	16° 36' 53.8" N	022° 47' 07.1" W	127.29° (CVS)	12.00 DME CVS
IF	16° 32' 09.2" N	022° 56' 51.2" W	179.61° (LOC SL)	12.00 DME CVS
FAP	16° 39' 27.9" N	022° 56' 54.3" W	179.61° (LOC SL)	4.72 DME CVS

Precision final approach - Descent angle (Slope)	3.00° (5.24%)
--------------------------------------------------	---------------

### ATTACHMENT 3

---

---

SAL ISLAND / AMILCAR CABRAL

---

AERONAUTICAL DATABASE REQUIREMENTS

---

#### INSTRUMENT APPROACH PROCEDURES

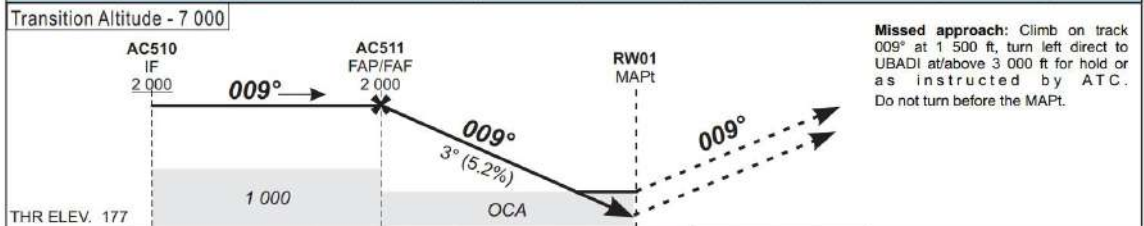
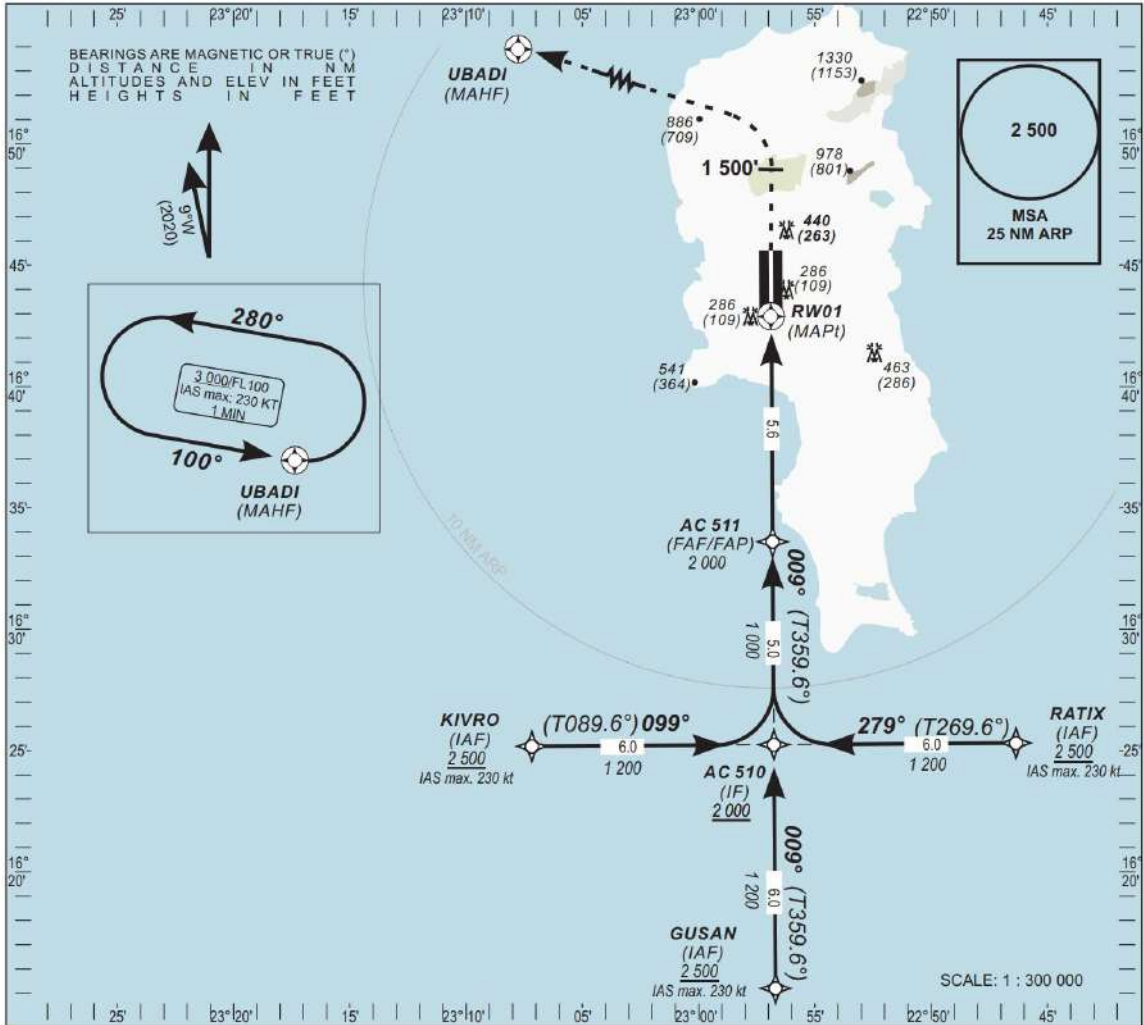
##### RWY 19 VOR

POINT	LAT	LONG	TRUE BEARING	DME DISTANCE (NM)
VOR/DME CVS (IAF)	16° 44' 12.0" N	022° 57' 03.7" W	-	-
ETSUS (IAF)	16° 51' 29.2" N	023° 07' 01.5" W	307.23° (CVS)	12.00 DME CVS
ERNIS (IAF)	16° 54' 36.3" N	022° 50' 45.1" W	030.27° (CVS)	12.00 DME CVS
IF	16° 56' 14.5" N	022° 56' 37.5" W	002.00° (CVS)	12.00 DME CVS
FAF	16° 50' 03.2" N	022° 56' 50.9" W	002.00° (CVS)	5.83 DME CVS
MAPT	16° 46' 12.5" N	022° 56' 59.3" W	002.00° (CVS)	2.00 DME CVS

Non-precision final approach - Slope (Descent angle)	5.24% (3.00°)
------------------------------------------------------	---------------

# ATTACHMENT 4

INSTRUMENT APPROACH CHART - ICAO      **AERODROME ELEV - 179 ft**  
 HEIGHTS RELATED TO THR RWY 01 ELEV - 177 ft      **APP - 126.4**  
**TWR - 119.7**      **SAL ISLAND / AMILCAR CABRAL Intl (GVAC)**  
**RNP RWY 01**      **ACFT CAT - A - B - C - D**



OCA (OCH)	A	B	C	D
LNAV / VNAV (1)	460 (290)	470 (300)	490 (320)	520 (350)
LNAV	610 (440)			
CIRCLING (2)	East RWY 01	1 130 (960)	1 380 (1 210)	1 730 (1 560)
	West RWY 01	760 (590)	840 (670)	930 (760)

Notes: - RDH: 15 m - (1) Minimum temperature : 10 °C - (2) Daytime only . OCHAAL - Timing not authorized for defining MAPt - For data tabulation see verso	To RW01 (NM)	FAF	5	4	3	2	1	
	Altitude	2 000	1 830	1 510	1 190	870	550	
	Ground Speed	kt	80	100	120	140	160	180
	Timing FAF-MAPt 5.6 NM	min:s	4:12	3:22	2:48	2:24	2:06	1:52
	Rate of Descent FAF-MAPt	ft/min	420	530	640	740	850	950

INSTRUMENT  
APPROACH  
CHART - ICAO

AERODROME ELEV - 179 ft  
HEIGHTS RELATED TO  
THR RWY 01 ELEV - 177 ft

APP - 126.4  
TWR - 119.7

SAL / AMILCAR CABRAL (GVAC)  
RNAV<sub>(GNSS)</sub> RWY 01  
ACFT CAT - A - B - C - D

## TABULAR DESCRIPTION

RNAV (GNSS) RWY 01											
Serial Nr	Path Descriptor	Waypoint Identifier	Fly-Over	Course °M(°T)	Magnetic Variation	Distance (NM)	Turn	Altitude (Ft)	Speed (Kt)	VPA/RDH (°/m)	NAV-Spec
010	IF	KIVRO	-	-		-	-	+2 500	-230		RNP APCH
020	TF	AC510	-	099(089.6)		6.0	-	+2 000	-230		RNP APCH
010	IF	GUSAN	-	-		-	-	+2 500	-230		RNP APCH
020	TF	AC510	-	009(359.6)		6.0	-	+2 000	-230		RNP APCH
010	IF	RATIX	-	-		-	-	+2 500	-230		RNP APCH
020	TF	AC510	-	279(269.6)		6.0	-	+2 000	-230		RNP APCH
010	IF	AC510	-	-		-	-	+2 000	-230		RNP APCH
020	TF	AC511	-	009(359.6)		5.0	-	@2 000	-		RNP APCH
030	TF	RW01	Y	009(359.6)	9°W	5.6	-	@226	-	3.0/15	RNP APCH
040	CA	-	-	009(359.6)		-	-	@1 500	-230		RNP APCH
050	DF	UBADI	y	-		-	L	+3 000	-230		RNP APCH
060	HM	UBADI	Y	100(091.0)		1 MIN	L	+3 000	-230		RNP APCH

## WAYPOINTS LIST

RNAV (GNSS) RWY 01			
Waypoint	Latitude	Longitude	Fix status
KIVRO	16°32'46.9"N	023°03'06.3"W	IAF
GUSAN	16°26'48.0"N	022°56'49.0"W	IAF
RATIX	16°32'51.8"N	022°50'36.7"W	IAF
AC510	16°32'49.4"N	022°56'51.5"W	IF
AC511	16°37'50.7"N	022°56'53.6"W	FAF
RW01	16°43'26.23"N	022°56'55.92"W	MAPt
UBADI	16°54'49.5"N	023°17'19.4"W	MAHF

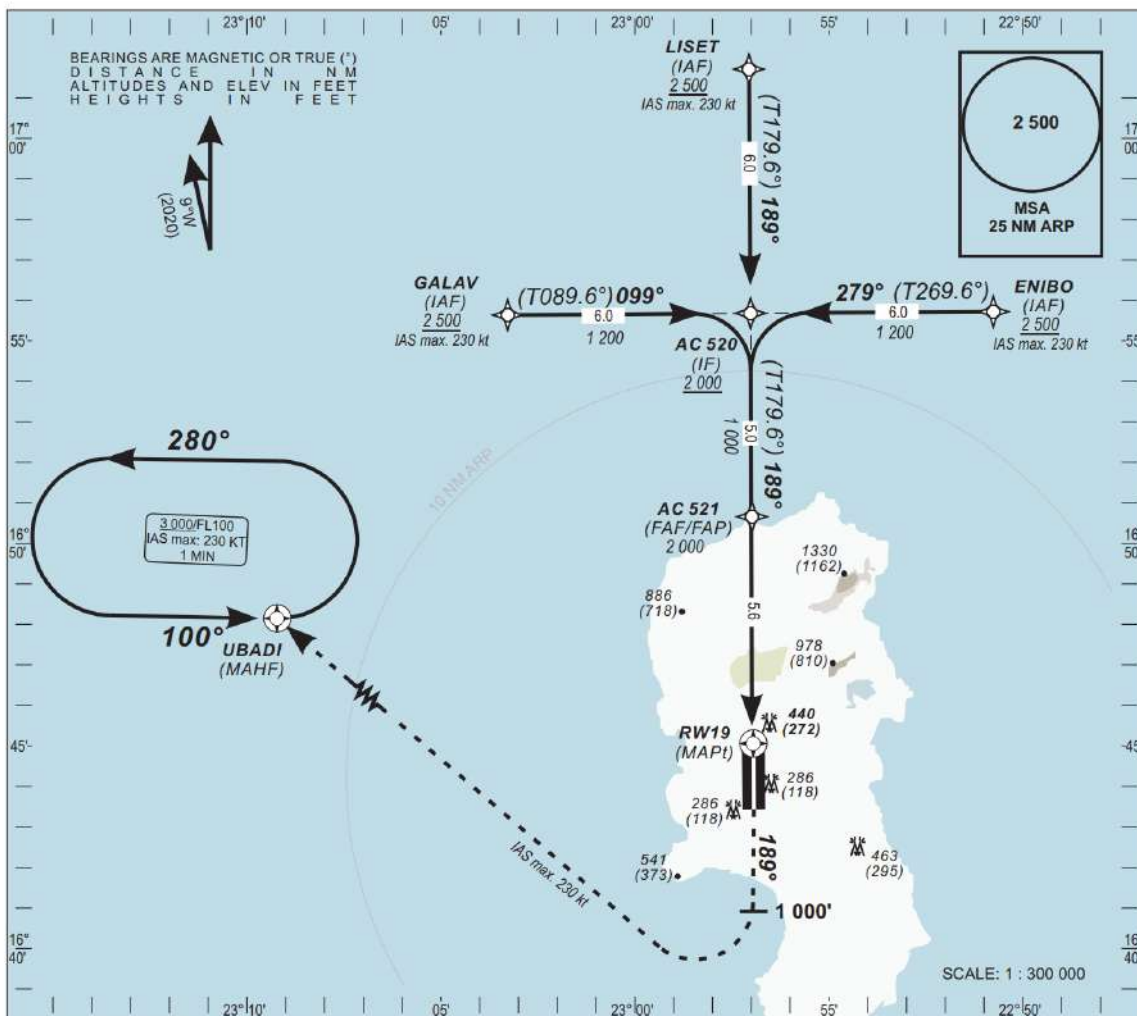
# ATTACHMENT 5

INSTRUMENT  
APPROACH  
CHART - ICAO

**AERODROME ELEV - 179 ft**  
HEIGHTS RELATED TO  
THR RWY 19 ELEV - 168 ft

APP - 126.4  
TWR - 119.7

**SAL ISLAND / AMILCAR CABRAL Intl (GVAC)**  
RNP RWY 19  
ACFT CAT - A - B - C - D



Transition Altitude - 7 000

**Missed approach:**  
Climb on track 189° at 1 000 ft, turn right direct to UBADI at/above 3 000 ft for hold or as instructed by ATC.

**NOTE:**  
No turn before MAPt  
IAS max. 230 kt.

THR ELEV. 168  
THR RWY 19

	A	B	C	D
OCA (OCH)				
LNAV / VNAV (1)	570 (410)	590 (430)	590 (430)	600 (440)
LNAV	690 (530)			
CIRCLING (2)	East RWY 01	760 (590)	1 130 (960)	1 380 (1 210)
	West RWY 01	760 (590)	840 (670)	930 (760)

	To RWY19 (NM)				
	FAF	5	4	3	2
Altitude	2 000	1 820	1 500	1 180	860
Ground Speed	kt	80	100	120	140
Timing FAF-MAPt 5.6 NM	min:s	4:12	3:22	2:48	2:24
Rate of Descent FAF-MAPt	ft/min	420	530	640	740

**Notes:**  
 - RDH: 15 m  
 - (1) Minimum temperature : 10°C  
 - (2) Daytime only , OCH AAL  
 - Timing not authorized for defining MAPt  
 - For data tabulation see verso



INSTRUMENT  
APPROACH  
CHART - ICAO

AERODROME ELEV - 179 ft  
HEIGHTS RELATED TO  
THR RWY 19 ELEV - 168 ft

APP - 126.4  
TWR - 119.7

SAL / AMILCAR CABRAL (GVAC)  
RNAV<sup>(GNSS)</sup> RWY 19  
ACFT CAT - A - B - C - D

## TABULAR DESCRIPTION

RNAV (GNSS) RWY 19											
Serial Nr	Path Descriptor	Waypoint Identifier	Fly-Over	Course °M(°T)	Magnetic Variation	Distance (NM)	Turn	Altitude (Ft)	Speed (Kt)	VPA/RDH (°/m)	NAV-Spec
010	IF	GALAV	-	-	-	-	-	+2 500	-230		RNP APCH
020	TF	AC520	-	099(089.6)		6.0	-	+2 000	-230		RNP APCH
010	IF	LISET	-	-		-	-	+2 500	-230		RNP APCH
020	TF	AC520	-	189(179.6)		6.0	-	+2 000	-230		RNP APCH
010	IF	ENIBO	-	-		-	-	+2 500	-230		RNP APCH
020	TF	AC520	-	279(269.6)		6.0	-	+2 000	-230		RNP APCH
010	IF	AC520	-	-		-	-	+2 000	-230		RNP APCH
020	TF	AC521	-	189(179.6)		5.0		@2 000	-		RNP APCH
030	TF	RW19	Y	189(179.6)	9°W	5.6		@217	-	3.0/15	RNP APCH
040	CA	-	-	189(179.6)		-		@1 000	-230		RNP APCH
050	DF	UBADI	y	-		-	R	-	-230		RNP APCH
060	HM	UBADI	Y	100(091.0)		1 MIN	L	+3 000	-230		RNP APCH

## WAYPOINTS LIST

RNAV (GNSS) RWY 19			
Waypoint	Latitude	Longitude	Fix status
GALAV	16°55'39.9"N	023°03'16.6"W	IAF
LISET	17°01'43.9"N	022°57'03.6"W	IAF
ENIBO	16°55'44.8"N	022°50'45.5"W	IAF
AC520	16°55'42.4"N	022°57'01.1"W	IF
AC521	16°50'41.2"N	022°56'59.0"W	FAF
RW19	16°45'03.83"N	022°56'56.60"W	MAPt
UBADI	16°54'49.5"N	023°17'19.4"W	MAHF

# ATTACHMENT 6

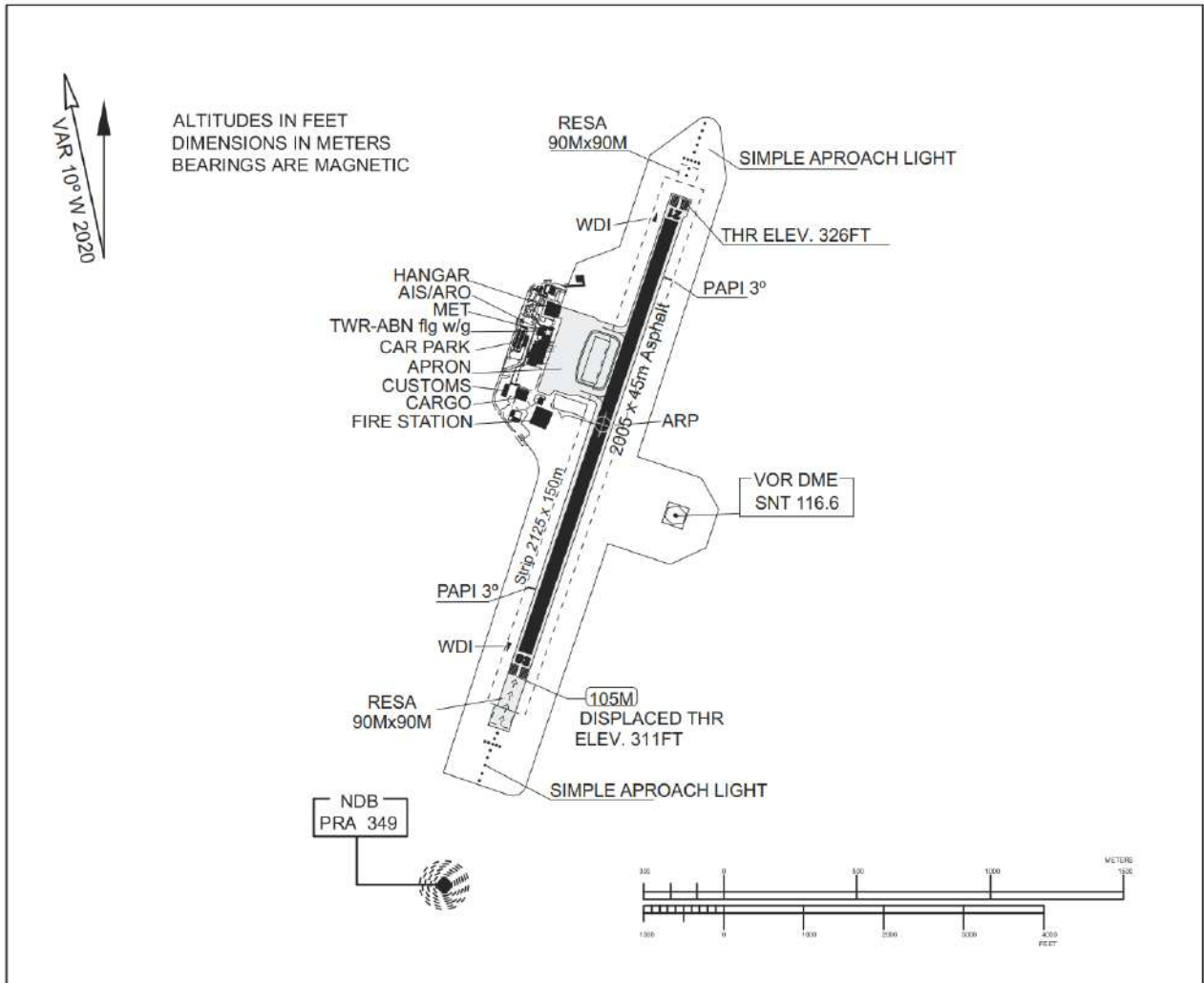
**AERODROME  
CHART**

14°56'31"N  
023°29'03"W

ELEV-326 FT

TWR - 118.200

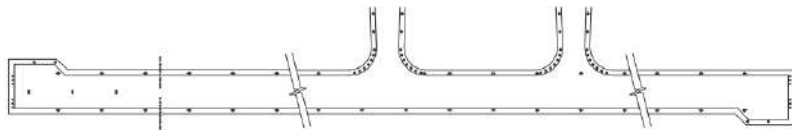
**AEROPORTO INTL DA  
PRAIA/NELSON MANDELA**



MARKING AIDS RWY 03-21 AND EXIT TWY



LIGHTING AIDS RWY 03-21 AND EXIT TWY



RWY	DIRECTION	THR	BEARING	STRENGTH	LIGHTING				
					RWY	PAPI	APPROACH	THRESHOLD	RUNWAY
03	022°GEO 033°MAG	14°56'02.43"N 023°29'15.57"N	PCN 49/F/B/X/U		03	3°	SIMPLE	RED	WHITE
21	202°GEO 213°MAG	14°56'59.75"N 023°28'51.77"W	PCN 49/F/B/X/U		21	3°	SIMPLE	RED	
					OTHERS : TAXIWAYS				
HELIPORT									

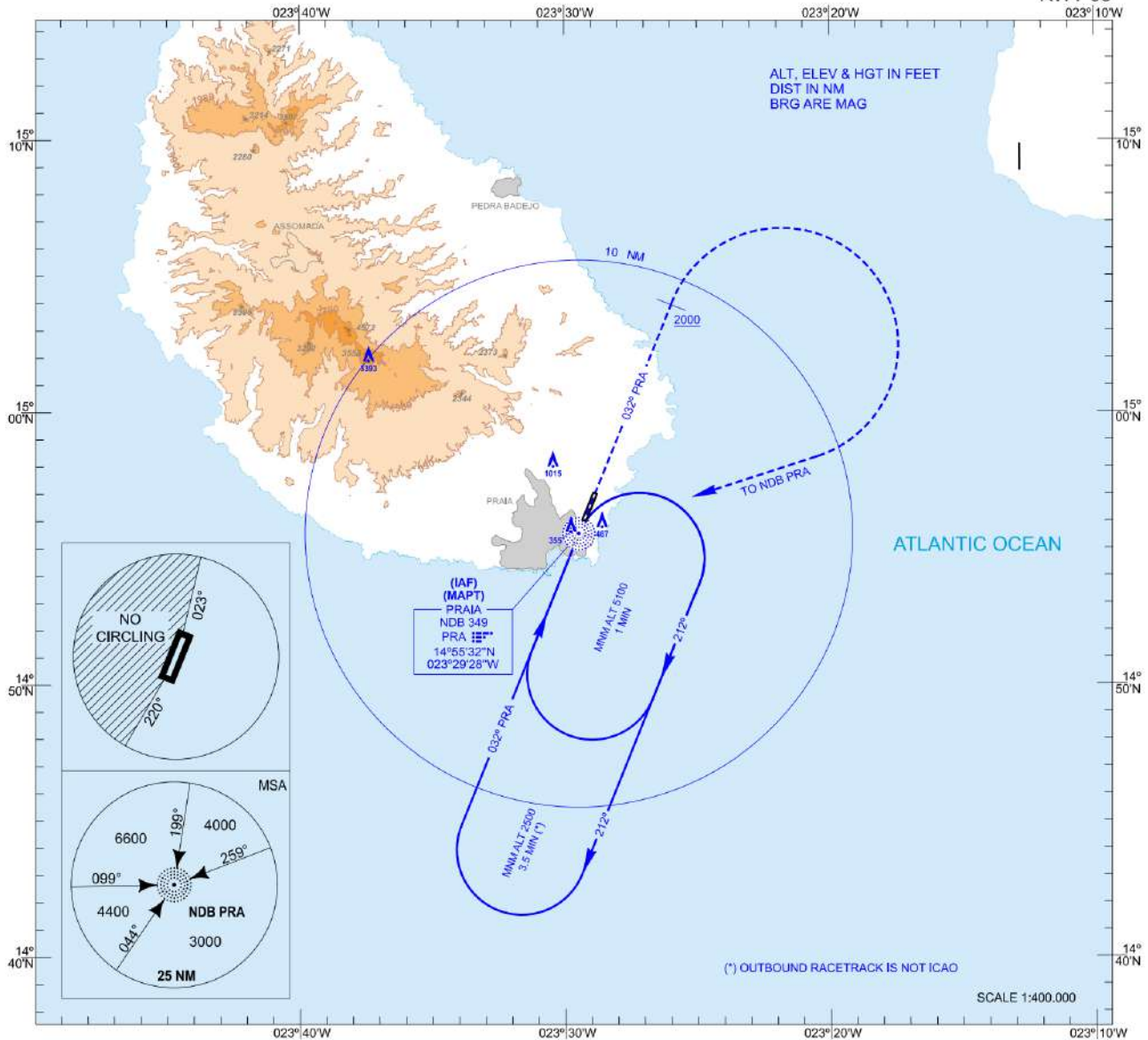
# ATTACHMENT 7

INSTRUMENT  
APPROACH  
CHART - ICAO

ELEV AD 325  
VAR 10°W (2020)

TWR 118.200

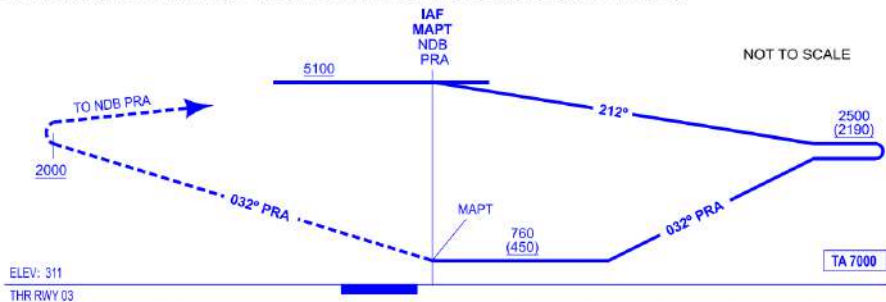
PRAIA / Nelson Mandela  
SANTIAGO  
NDB (CAT A&B)  
RWY 03



MISSED APCH: CLIMB ON MAGNETIC TRACK 032° PRA TO REACH 2000. TURN RIGHT DIRECT TO NDB PRA CLIMBING TO 5100 TO JOIN THE HOLDING.

**NOTES:**

- Circle to land at the discretion of the pilot in command.
- Timing not authorised to define MAPT.
- No turns allowed before MAPT (overhead NDB PRA).
- Descent to OCA/H only allowed when acft established on final approach inbound track.
- MAX IAS 250 kt for the missed approach and communications failure procedure.



HGT REF ELEV THR RWY 03

OCA/H	A	B	C	D
2.5%	760 (450)			
STA				
<b>Circling (H) over</b>	325	1030 (710)	1480 (1160)	

GS	kt	80	100	120	140	160	180
<b>FAF-THR:</b>	min:s						
<b>FAF-MAPT:</b>	min:s						
<b>ROD:</b>	ft/min						
<b>ALT/HGT DME ( ) FNA</b>							
13 DME	12 DME	11 DME	10 DME	9 DME	8 DME	7 DME	6 DME
5 DME	4 DME	3 DME	2 DME	1 DME			

NEW CHART

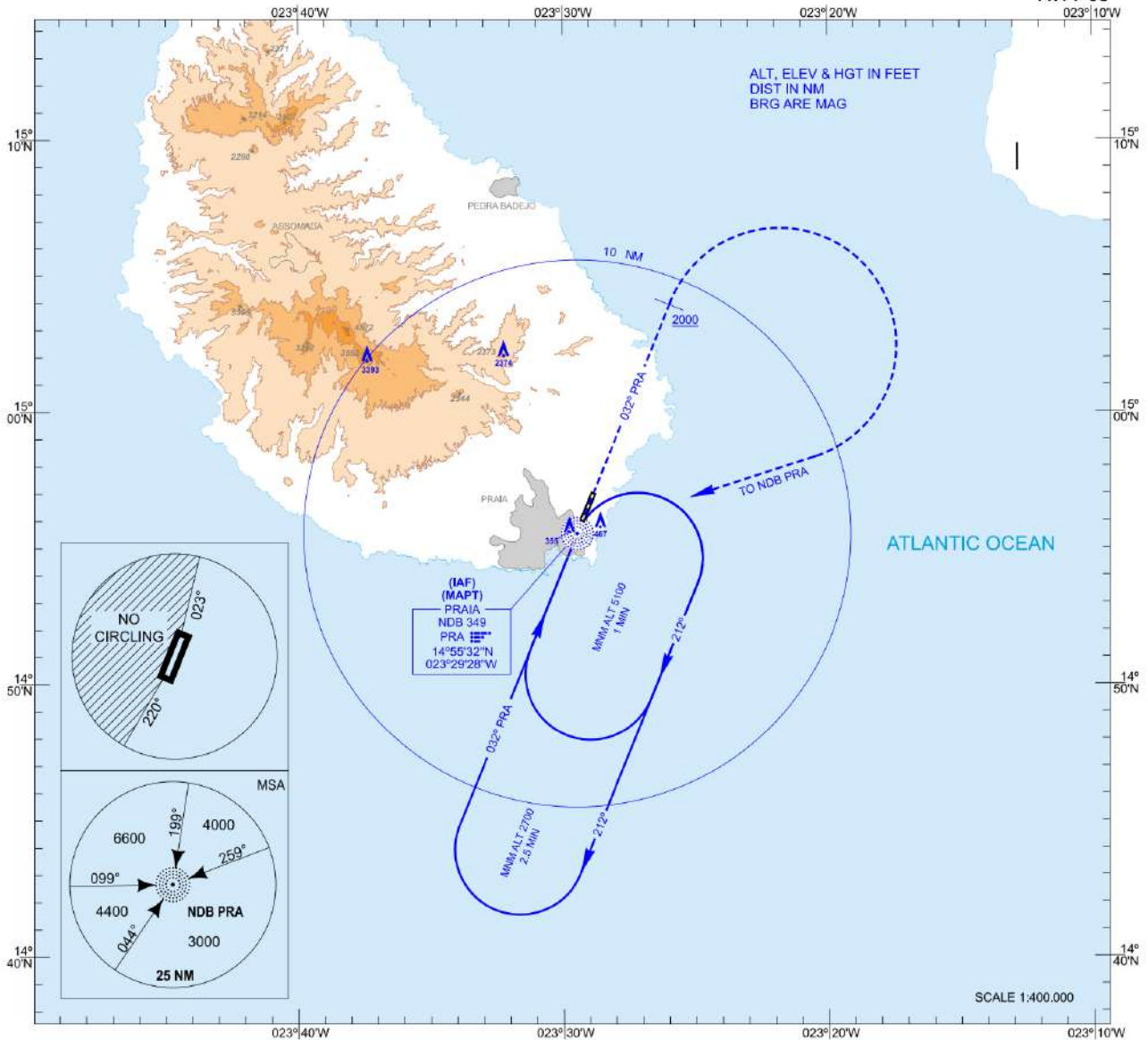
# ATTACHMENT 8

INSTRUMENT  
APPROACH  
CHART - ICAO

ELEV AD 325  
VAR 10°W (2020)

TWR 118.200

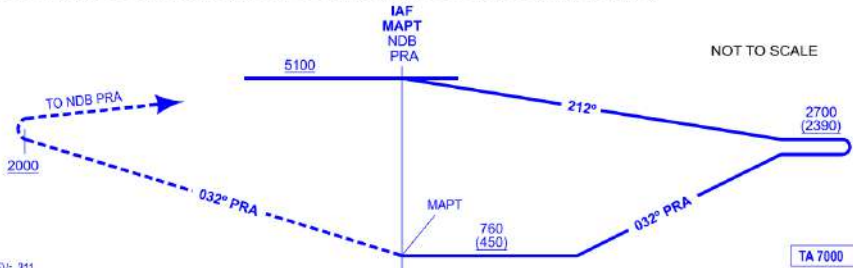
**PRAIA / Nelson Mandela  
SANTIAGO  
NDB (CAT C&D)  
RWY 03**



MISSED APCH: CLIMB ON MAGNETIC TRACK 032° PRA TO REACH 2000. TURN RIGHT DIRECT TO NDB PRA CLIMBING TO 5100 TO JOIN THE HOLDING.

**NOTES:**

- Circle to land at the discretion of the pilot in command.
- Timing not authorised to define MAPT.
- No turns allowed before MAPT (overhead NDB PRA).
- Descent to OCA/H only allowed when act established on final approach inbound track.
- MAX IAS 250 kt for the missed approach and communications failure procedure.



**HGT REF ELEV THR RWY 03**

OCA/H	A	B	C	D
2.5%			760 (450)	
STA				
Circle to land (H) over	325		1640 (1320)	1650 (1330)

GS	kt	80	100	120	140	160	180
FAF-THR:	mins						
FAF-MAPT:	mins						
ROD:	ft/min						
ALT/HGT DME ( ) FNA							
13 DME	12 DME	11 DME	10 DME	9 DME	8 DME	7 DME	6 DME
5 DME	4 DME	3 DME	2 DME	1 DME			

NEW CHART

# ATTACHMENT 9

STANDARD ARRIVAL CHART  
INSTRUMENT (STAR)  
Categories A–B–C–D

RNP 1 OPERATIONS

SAL AMILCAR CABRAL / Intl (GVAC)  
RWY 01

PINPO 1F, BIRAP 1F, AMDER 1F, GAGUS 1F, GUSOB 1F

## TABULAR DESCRIPTION

### PINPO 1F

Serial Nr	Path Descriptor	Waypoint Ident.	Fly-Over	Course °M(°T)	Magnetic Variation	Distance (NM)	Turn Direction	Altitude (Ft)	Speed Limit (Kt)	Navigation Specification
010	IF	PINPO	-	-	-	-	-	-	-	RNP 1
020	TF	AC610	-	239(230.0)	-	68.2	L	-	-	RNP 1
030	TF	AC611	-	189(179.6)	-	5.0	-	+F090	-	RNP 1
040	TF	RATIX	-	189(179.6)	-	17.0	-	+2 500	-230	RNP 1

### BIRAP 1F

Serial Nr	Path Descriptor	Waypoint Ident.	Fly-Over	Course °M(°T)	Magnetic Variation	Distance (NM)	Turn Direction	Altitude (Ft)	Speed Limit (Kt)	Navigation Specification
010	IF	BIRAP	-	-	-	-	-	-	-	RNP 1
020	TF	AC612	-	293(284.3)	-	19.0	-	- F110	-	RNP 1
030	TF	GUSAN	-	293(284.3)	-	16.1	+2 500	-	-230	RNP 1

### AMDER 1F

Serial Nr	Path Descriptor	Waypoint Ident.	Fly-Over	Course °M(°T)	Magnetic Variation	Distance (NM)	Turn Direction	Altitude (Ft)	Speed Limit (Kt)	Navigation Specification
010	IF	AMDER	-	-	-	-	-	-	-	RNP 1
020	TF	GUSAN	-	032(023.1)	-	55.6	-	+2 500	-230	RNP 1

### GAGUS 1F

Serial Nr	Path Descriptor	Waypoint Ident.	Fly-Over	Course °M(°T)	Magnetic Variation	Distance (NM)	Turn Direction	Altitude (Ft)	Speed Limit (Kt)	Navigation Specification
010	IF	GAGUS	-	-	-	-	-	-	-	RNP 1
020	TF	KIVRO	-	106(097.3)	-	38.0	-	+2 500	-230	RNP 1

### GUSOB 1F

Serial Nr	Path Descriptor	Waypoint Ident.	Fly-Over	Course °M(°T)	Magnetic Variation	Distance (NM)	Turn Direction	Altitude (Ft)	Speed Limit (Kt)	Navigation Specification
010	IF	GUSOB	-	-	-	-	-	-	-	RNP 1
020	TF	AC614	-	170(161.0)	-	21.5	R	-	-	RNP 1
030	TF	AC613	-	189(179.6)	-	11.7	-	+F090	-	RNP 1
040	TF	KIVRO	-	189(179.6)	-	17.0	-	+2 500	-230	RNP 1

## WAYPOINT LIST

Waypoint	Latitude	Longitude	Fix type	Notes
AC610	16°54'58.5"N	022°50'46.1"W	AWP	
AC611	16°49'57.2"N	022°50'44.0"W	AWP	
AC612	16°22'51.1"N	022°40'37.4"W	AWP	
AC613	16°49'52.4"N	023°03'14.0"W	AWP	
AC614	17°01'39.8"N	023°03'19.3"W	AWP	
AMDER	15°35'31.1"N	023°19'28.7"W	AWP	
GUSOB	17°22'02.2"N	023°10'36.8"W	AWP	
BIRAP	16°18'07.6"N	022°21'28.7"W	AWP	
GAGUS	16°37'40.4"N	023°42'21.5"W	AWP	
GUSAN	16°26'48.0"N	022°56'49.0"W	IAF	
KIVRO	16°32'46.9"N	023°03'06.3"W	IAF	
PINPO	17°39'05.0"N	021°56'18.0"W	AWP	
RATIX	16°32'51.8"N	022°50'36.7"W	IAF	

# ATTACHMENT 10

**STANDARD ARRIVAL CHART  
INSTRUMENT (STAR)  
Categories A–B–C–D**

RNP 1 OPERATIONS

**SAL AMILCAR CABRAL / Intl (GVAC)  
RWY 19**

PINPO 1G, BIRAP 1G, AMDER 1G, GAGUS 1G, GUSOB 1G

## TABULAR DESCRIPTION

### PINPO 1G

Serial Nr	Path Descriptor	Waypoint Ident.	Fly-Over	Course °M(°T)	Magnetic Variation	Distance (NM)	Turn Direction	Altitude (Ft)	Speed Limit (Kt)	Navigation Specification
010	IF	PINPO	-	-	-	-	-	-	-	RNP 1
020	TF	AC620	-	232(223.1)	-	58.9	R	-F100	-	RNP 1
030	TF	ENIBO	-	279(269.7)	-	12.0	-	+2 500	-230	RNP 1

### BIRAP 1G

Serial Nr	Path Descriptor	Waypoint Ident.	Fly-Over	Course °M(°T)	Magnetic Variation	Distance (NM)	Turn Direction	Altitude (Ft)	Speed Limit (Kt)	Navigation Specification
010	IF	BIRAP	-	-	-	-	-	-	-	RNP 1
020	TF	RATIX	-	307(297.8)	-	31.8	R	-	-	RNP 1
030	TF	AC621	-	009(359.6)	-	6.0	-	+F100	-	RNP 1
040	TF	ENIBO	-	009(359.6)	-	16.7	L	+2 500	-230	RNP 1

### AMDER 1G

Serial Nr	Path Descriptor	Waypoint Ident.	Fly-Over	Course °M(°T)	Magnetic Variation	Distance (NM)	Turn Direction	Altitude (Ft)	Speed Limit (Kt)	Navigation Specification
010	IF	AMDER	-	-	-	-	-	-	-	RNP 1
020	TF	AC622	-	023(013.8)	-	65.7	L	+F100	-	RNP 1
030	TF	AC624	-	009(359.6)	-	8.5	-	+F090	-	RNP 1
040	TF	GALAV	-	009(359.6)	-	7.5	R	+2 500	-	RNP 1

### GAGUS 1G

Serial Nr	Path Descriptor	Waypoint Ident.	Fly-Over	Course °M(°T)	Magnetic Variation	Distance (NM)	Turn Direction	Altitude (Ft)	Speed Limit (Kt)	Navigation Specification
010	IF	GAGUS	-	-	-	-	-	-	-	RNP 1
020	TF	AC623	-	083(074.4)	-	31.0	-	+F130	-	RNP 1
030	TF	AC624	-	083(074.4)	-	8.0	L	+F090	-	RNP 1
040	TF	GALAV	-	009(359.6)	-	7.5	R	+2 500	-	RNP 1

### GUSOB 1G

Serial Nr	Path Descriptor	Waypoint Ident.	Fly-Over	Course °M(°T)	Magnetic Variation	Distance (NM)	Turn Direction	Altitude (Ft)	Speed Limit (Kt)	Navigation Specification
010	IF	GUSOB	-	-	-	-	-	-	-	RNP 1
040	TF	LISET	-	156(147.3)	-	24.0	-	+2 500	-230	RNP 1

## WAYPOINT LIST

Waypoint	Latitude	Longitude	Fix type	Notes
AC620	16°55'47.8"N	022°38'14.5"W	AWP	
AC621	16°38'54.6"N	022°50'39.0"W	AWP	
AC622	16°39'34.5"N	023°03'09.8"W	AWP	
AC623	16°45'59.1"N	023°11'14.0"W	AWP	
AC624	16°48'06.6"N	023°03'13.4"W	AWP	
AMDER	15°35'31.1"N	023°19'28.7"W	AWP	
ENIBO	16°55'44.8"N	022°50'45.5"W	IAF	
GUSOB	17°22'02.2"N	023°10'36.8"W	AWP	
BIRAP	16°18'07.6"N	022°21'28.7"W	AWP	
GAGUS	16°37'40.4"N	023°42'21.5"W	AWP	
GALAV	16°55'39.9"N	023°03'16.6"W	IAF	
LISET	17°01'43.9"N	022°57'03.6"W	IAF	
PINPO	17°39'05.0"N	021°56'08.0"W	AWP	
RATIX	16°32'51.8"N	022°50'36.7"W	IAF	

## ATTACHMENT 11

### Instrument Approach Procedure RNAV (GNSS) RWY 03 coding table

PROCEDURE DESCRIPTION / APPROACH FROM BA501			
TEXTUAL DESCRIPTION	ABBREVIATED DESCRIPTION	EXPECTED PATH TERMINATOR CODING	FLY-OVER REQUIRED
BA501 at 2500 ft or above	BA501 [A2500+]	IF	-
to BA13S (IF) at 2500 ft or above	BA13S [A2500+]	TF	-
to BA08S (FAF) at 2500 ft or above	BA08S [A2500+]	TF	-
to RW03 at 106 ft or above	RW03 [A106+]	TF	Y
MISSED APPROACH			
Direct to BA520, turn left	BA520 [L]	DF	Y
Direct to BA502 (HM; R, T106.6; 1min) at 2500 ft or above	BA502 [HM; R; T106.6; 1min; A2500+]	DF	-

PROCEDURE DESCRIPTION / APPROACH FROM BA502			
TEXTUAL DESCRIPTION	ABBREVIATED DESCRIPTION	EXPECTED PATH TERMINATOR CODING	FLY-OVER REQUIRED
BA502 at 2500 ft or above	BA502 [A2500+]	IF	-
to BA13S (IF) at 2500 ft or above	BA13S [A2500+]	TF	-
to BA08S (FAF) at 2500 ft or above	BA08S [A2500+]	TF	-
to RW03 at 106 ft or above	RW03 [A106+]	TF	Y
MISSED APPROACH			
Direct to BA520, turn left	BA520 [L]	DF	Y
Direct to BA502 (HM; R, T106.6; 1min) at 2500 ft or above	BA502 [HM; R; T106.6; 1min; A2500+]	DF	-

PROCEDURE DESCRIPTION / APPROACH FROM BA503			
TEXTUAL DESCRIPTION	ABBREVIATED DESCRIPTION	EXPECTED PATH TERMINATOR CODING	FLY-OVER REQUIRED
BA503 at 2500 ft or above	BA503 [A2500+]	IF	-
to BA13S (IF) at 2500 ft or above	BA13S [A2500+]	TF	-
to BA08S (FAF) at 2500 ft or above	BA08S [A2500+]	TF	-
to RW03 at 106 ft or above	RW03 [A106+]	TF	Y
MISSED APPROACH			
Direct to BA520, turn left	BA520 [L]	DF	Y
Direct to BA502 (HM; R, T106.6; 1min) at 2500 ft or above	BA502 [HM; R; T106.6; 1min; A2500+]	DF	-

#### WAYPOINTS COORDINATES

WAYPOINT	COORDINATES	
BA501 (IAF)	15°49'52.68"N 022°58'59.82"W	
BA502 (IAF)	15°57'22.66"N 023°03'10.73"W	
BA503 (IAF)	15°53'55.22"N 022°51'14.93"W	
BA13S (IF)	15°55'39.02"N 022°57'12.78"W	
BA08S (FAF)	16°00'27.63"N 022°55'43.50"W	
RW03 (MAPt)	16°07'41.67"N 022°53'29.10"W	
BA520	16°12'30.25"N 022°51'59.65"W	
Non-Precision Final Approach (LNAV) – Descent angle (Slope)		3.00° (5.24%)
APV Baro Approach – VNAV (VNAV/LNAV) – Descent angle (Slope)		3.00° (5.24%)

## ATTACHMENT 12

### Instrument Approach Procedure RNAV (GNSS) RWY 21 coding table

PROCEDURE DESCRIPTION / APPROACH FROM BA504			
TEXTUAL DESCRIPTION	ABBREVIATED DESCRIPTION	EXPECTED PATH TERMINATOR CODING	FLY-OVER REQUIRED
BA504 at 2500 ft or above	BA504 [A2500+]	IF	-
to BA10N (IF) at 1700 ft or above	BA10N [A1700+]	TF	-
to BA05N (FAF) at 1700 ft or above	BA05N [A1700+]	TF	-
to RW21 at 140 ft or above	RW21 [A140+]	TF	Y
MISSED APPROACH			
From RW21 climb on track 207°M, at 640 ft turn right.	[M207; A640; R]	FA	-
Direct to BA530, turn right	BA530 [R]	DF	-
to BA506 (HM; L, T106.7; 1min) at 2500 ft or above	BA506 [HM; L; T106.7; 1min; A2500+]	TF	-
PROCEDURE DESCRIPTION / APPROACH FROM BA505			
TEXTUAL DESCRIPTION	ABBREVIATED DESCRIPTION	EXPECTED PATH TERMINATOR CODING	FLY-OVER REQUIRED
BA505 at 2500 ft or above	BA505 [A2500+]	IF	-
to BA10N (IF) at 1700 ft or above	BA10N [A1700+]	TF	-
to BA05N (FAF) at 1700 ft or above	BA05N [A1700+]	TF	-
to RW21 at 140 ft or above	RW21 [A140+]	TF	Y
MISSED APPROACH			
From RW21 climb on track 207°M, at 640 ft turn right.	[M207; A640; R]	FA	-
Direct to BA530, turn right	BA530 [R]	DF	-
to BA506 (HM; L, T106.7; 1min) at 2500 ft or above	BA506 [HM; L; T106.7; 1min; A2500+]	TF	-
PROCEDURE DESCRIPTION / APPROACH FROM BA506			
TEXTUAL DESCRIPTION	ABBREVIATED DESCRIPTION	EXPECTED PATH TERMINATOR CODING	FLY-OVER REQUIRED
BA506 at 2500 ft or above	BA506 [A2500+]	IF	-
to BA10N (IF) at 1700 ft or above	BA10N [A1700+]	TF	-
to BA05N (FAF) at 1700 ft or above	BA05N [A1700+]	TF	-
to RW21 at 140 ft or above	RW21 [A140+]	TF	Y
MISSED APPROACH			
From RW21 climb on track 207°M, at 640 ft turn right.	[M207; A640; R]	FA	-
Direct to BA530, turn right	BA530 [R]	DF	-
to BA506 (HM; L, T106.7; 1min) at 2500 ft or above	BA506 [HM; L; T106.7; 1min; A2500+]	TF	-

#### WAYPOINTS COORDINATES

WAYPOINT	COORDINATES	
BA504 (IAF)	16°24'04.75"N 022°48'24.10"W	
BA505 (IAF)	16°16'34.70"N 022°44'13.10"W	
BA506 (IAF)	16°20'02.11"N 022°56'10.26"W	
BA10N (IF)	16°18'18.49"N 022°50'11.63"W	
BA05N (FAF)	16°13'29.93"N 022°51'41.16"W	
RW21 (MAPt)	16°08'47.12"N 022°53'08.82"W	
BA530	16°07'25.89"N 023°01'08.82"W	
Non-Precision Final Approach (LNAV) – Descent angle (Slope)		3.00° (5.24%)
APV Baro Approach – VNAV (VNAV/LNAV) – Descent angle (Slope)		3.00° (5.24%)



## ATTACHMENT 13

PROCEDURE DESCRIPTION / APPROACH FROM SV501			
TEXTUAL DESCRIPTION	ABBREVIATED DESCRIPTION	EXPECTED PATH TERMINATOR CODING	FLY-OVER REQUIRED
SV501 at 4000 ft.	SV501[A4000]	IF	-
To SV11E at or above 2500 ft, turn left.	SV11E[A2500+;L]	TF	-
To SV06E at 2100 ft.	SV06E[A2100]	TF	-
To RW24 at or above 154 ft.	RW24[A154+]	TF	Y
MISSED APPROACH			
Direct to SV504, turn left, maximum speed 185kt.	→SV504[L;K185-]	DF	-
To SV505, turn left.	SV505[L]	TF	-
To SV506, turn left	SV506[L]	TF	-
To SV501 {HM;R;T303.7;1min} at 4000 ft.	SV501 [HM;R; T303.7;1min;A4000]	TF	-
PROCEDURE DESCRIPTION / APPROACH FROM SV502			
TEXTUAL DESCRIPTION	ABBREVIATED DESCRIPTION	EXPECTED PATH TERMINATOR CODING	FLY-OVER REQUIRED
SV502 at 2500 ft.	SV502[A2500]	IF	-
To SV11E at 2500 ft.	SV11E[A2500]	TF	-
To SV06E at 2100 ft.	SV06E[A2100]	TF	-
To RW24 at or above 154 ft.	RW24[A154+]	TF	Y
MISSED APPROACH			
Direct to SV504, turn left, maximum speed 185kt.	→SV504[L;K185-]	DF	-
To SV505, turn left.	SV505[L]	TF	-
To SV506, turn left	SV506[L]	TF	-
To SV501 {HM;R;T303.7;1min} at 4000 ft.	SV501 [HM;R; T303.7;1min;A4000]	TF	-

WAYPOINT	COORDINATES
RW25 (MAPT)	16°50'20.6600"N 025°02'49.3900"W
SV06E (LNAV FAF)	16°53'58.9277"N 024°57'41.5981"W
SV11E (IF)	16°56'57.4612"N 024°53'29.5551"W
SV501 (IAF)	16°53'36.9933"N 024°48'17.0842"W
SV502 (IAF)	17°00'31.6898"N 024°48'27.0080"W
SV504	16°48'33.4345"N 025°05'20.4563"W
SV505	16°43'47.2417"N 025°01'41.6414"W
SV506	16°45'52.8583"N 024°54'17.6820"W

## ATTACHMENT 14

PROCEDURE DESCRIPTION/ APPROACH FROM SV401			
TEXTUAL DESCRIPTION	ABBREVIATED DESCRIPTION	EXPECTED PATH TERMINATOR CODING	FLY-OVER REQUIRED
SV401 at 2500 ft.	SV401[A2500]	IF	-
To SV12W at 2500 ft.	SV12W[A2500]	TF	-
To SV07W at 2300 ft.	SV07W[A2300]	TF	-
To SV02W at or above 714 ft.	SV02W[A714+]	TF	Y
MISSED APPROACH			
Direct to SV404, turn left, maximum speed 185kt.	→SV404[L;K185-]	DF	-
To SV405, turn left, maximum speed 220kt.	SV405[L,K220-]	TF	-
To SV406, turn left, maximum speed 220kt.	SV406[L,K220-]	TF	-
To SV403 (HM;RT068.5;1min) at 5300 ft.	SV403[HM;R;T068.5;1min;A5300]	TF	-
PROCEDURE DESCRIPTION/ APPROACH FROM SV402			
TEXTUAL DESCRIPTION	ABBREVIATED DESCRIPTION	EXPECTED PATH TERMINATOR CODING	FLY-OVER REQUIRED
SV402 at 2500 ft.	SV402[A2500]	IF	-
To SV12W at 2500 ft, turn right.	SV12W[A2500;R]	TF	-
To SV07W at 2300 ft.	SV07W[A2300]	TF	-
To SV02W at or above 714 ft.	SV02W[A714+]	TF	Y
MISSED APPROACH			
Direct to SV404, turn left, maximum speed 185kt.	→SV404[L;K185-]	DF	-
To SV405, turn left, maximum speed 220kt.	SV405[L,K220-]	TF	-
To SV406, turn left, maximum speed 220kt.	SV406[L,K220-]	TF	-
To SV403 (HM;R;T068.5;1min) at 5300 ft.	SV403[HM;R;T068.5;1min;A5300]	TF	-
PROCEDURE DESCRIPTION/ APPROACH FROM SV403			
TEXTUAL DESCRIPTION	ABBREVIATED DESCRIPTION	EXPECTED PATH TERMINATOR CODING	FLY-OVER REQUIRED
SV403 at 5300 ft.	SV403[A5300]	IF	-
To SV12W at or above 2500 ft, turn left.	SV12W[A2500+;L]	TF	-
To SV07W at 2300 ft.	SV07W[A2300]	TF	-
To SV02W at or above 714 ft.	SV02W[A714+]	TF	Y
MISSED APPROACH			
Direct to SV404, turn left, maximum speed 185kt.	→SV404[L;K185-]	DF	-
To SV405, turn left, maximum speed 220kt.	SV405[L,K220-]	TF	-
To SV406, turn left, maximum speed 220kt.	SV406[L,K220-]	TF	-
To SV403 (HM;R;T068.5;1min) at 5300 ft.	SV403[HM;R;T068.5;1min;A5300]	TF	-

WAYPOINT	COORDINATES
SV02W (MAPT)	16°48'33.4547"N 025°05'20.4278"W
SV07W (LNAV FAF)	16°46'43.5479"N 025°10'11.5857"W
SV12W (IF)	16°44'53.5265"N 025°15'02.6507"W
SV401 (IAF)	16°42'41.3500"N 025°20'51.8060"W
SV402 (IAF)	16°38'52.1592"N 025°14'53.4186"W
SV403 (IAF)	16°49'24.5854"N 025°19'10.9055"W
SV404	16°50'35.8055"N 024°59'55.9375"W
SV405	16°55'40.0830"N 024°58'09.3485"W
SV406	16°58'47.6770"N 025°02'13.2150"W